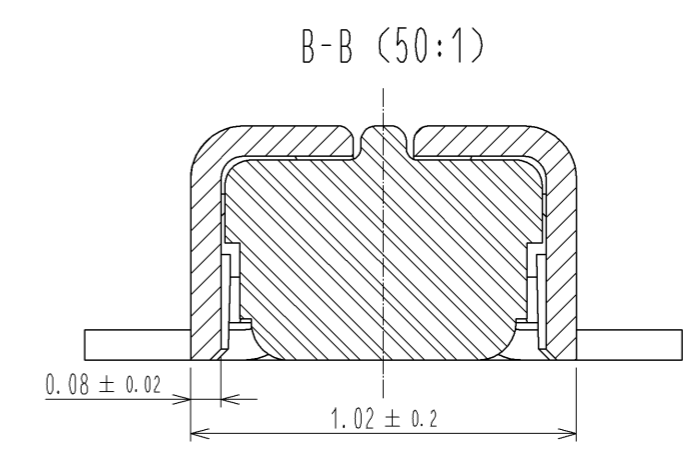
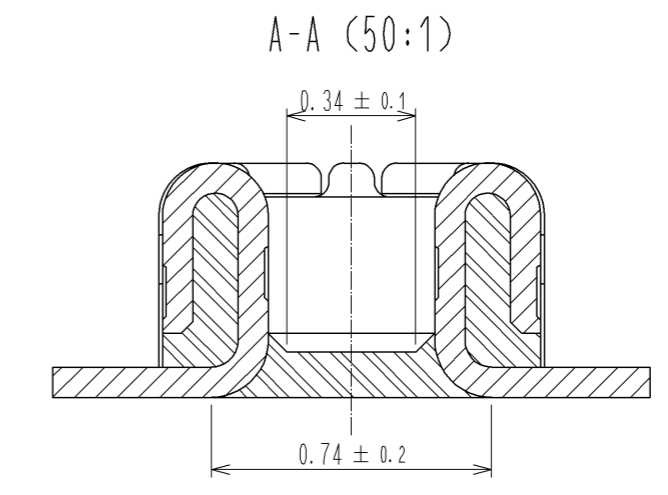
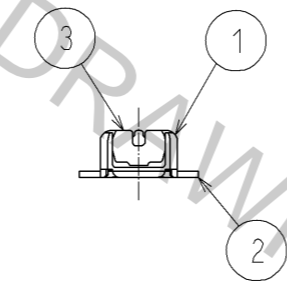
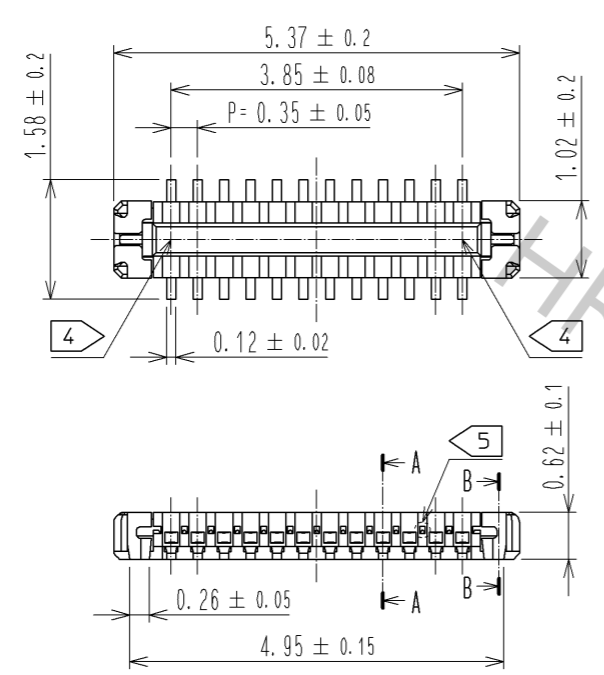
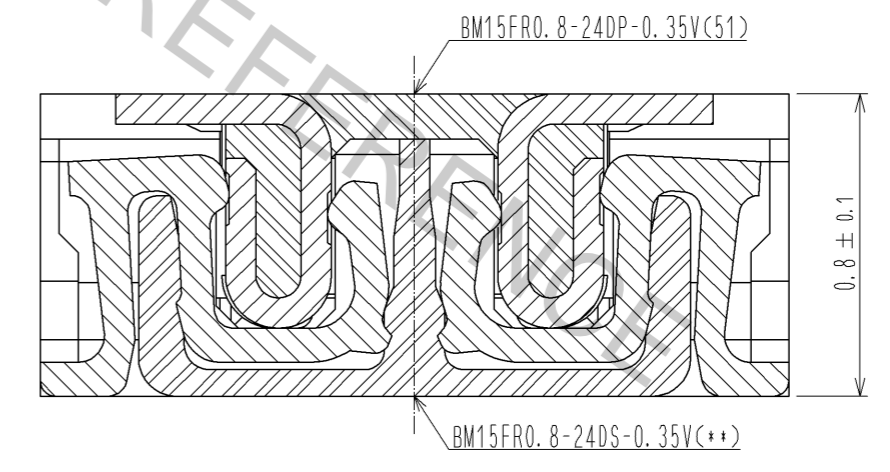


Apr.1.2017 Copyright 2017 HIROSE ELECTRIC CO., LTD. All Rights Reserved.



NOTE) 1 . ALL LEAD CO-PLANARITY SHALL BE 0.08mm MAX  
 2 CONTACT PLATING SPECIFICATIONS  
 CONTACT AREA : GOLD 0.05 μm MIN  
 SMT LEAD : GOLD 0.05 μm MIN  
 UNDERPLATING : NICKEL 1 μm MIN  
 ( SURFACE : SEALING )  
 3 REINFORCED METAL FITTINGS LOCK  
 SMT LEAD : GOLD 0.05 μm MIN  
 UNDERPLATING : NICKEL 1 μm MIN  
 ( SURFACE : SEALING )  
 4 CAV No. AND HRS MARK MYE BE INDICATED IN APPROX POSITION SHOWN.  
 5 A PART OF THE WALL COULD BE NOTCHED.

ENGAGEMENT FIGURE (50:1)

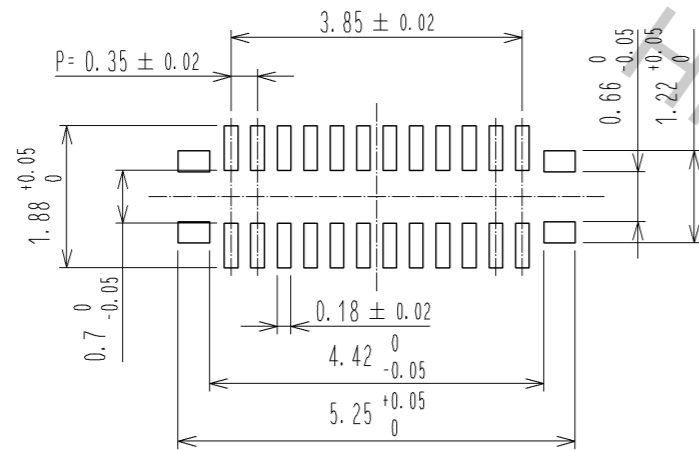


| NO. | MATERIAL        | FINISH . | REMARKS                       | NO. | MATERIAL  | FINISH . | REMARKS                      |
|-----|-----------------|----------|-------------------------------|-----|-----------|----------|------------------------------|
| 4   | PS              |          | CLEAR (ENBOSSED CARRIER TAPE) |     |           |          |                              |
| 3   | PHOSPHOR BRONZE | 3        |                               | 7   | PS        |          | CLEAR (REINFORCEMENT COLLAR) |
| 2   | PHOSPHOR BRONZE | 2        |                               | 6   | PS        |          | BLACK (PLASTIC REEL)         |
| 1   | LCP             |          | UL94 V-0, BLACK               | 5   | POLYESTER |          | CLEAR (COVER TAPE)           |

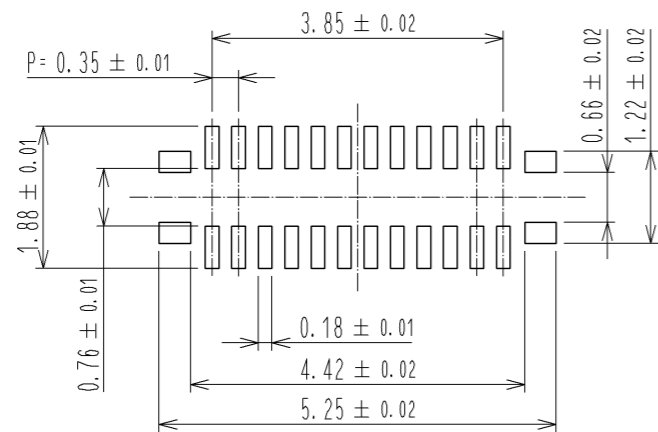
| UNITS                    | SCALE  | COUNT | DESCRIPTION OF REVISIONS | DESIGNED                          | CHECKED | DATE |
|--------------------------|--------|-------|--------------------------|-----------------------------------|---------|------|
| mm                       | 10 : 1 | △     |                          |                                   |         |      |
| APPROVED : KH. IKEDA     |        |       | 13.12.13                 | DRAWING NO. EDC3-355890-01        |         |      |
| CHECKED : YH. MICHIDA    |        |       | 13.12.12                 | PART NO. BM15FR0.8-24DP-0.35V(51) |         |      |
| DESIGNED : YK. KOBAYASHI |        |       | 13.12.12                 | CODE NO. CL673-1230-5-51          |         |      |
| DRAWN : YK. KOBAYASHI    |        |       | 13.12.12                 | △ 1/3                             |         |      |

◆ RECOMMENDED PCB LAYOUT

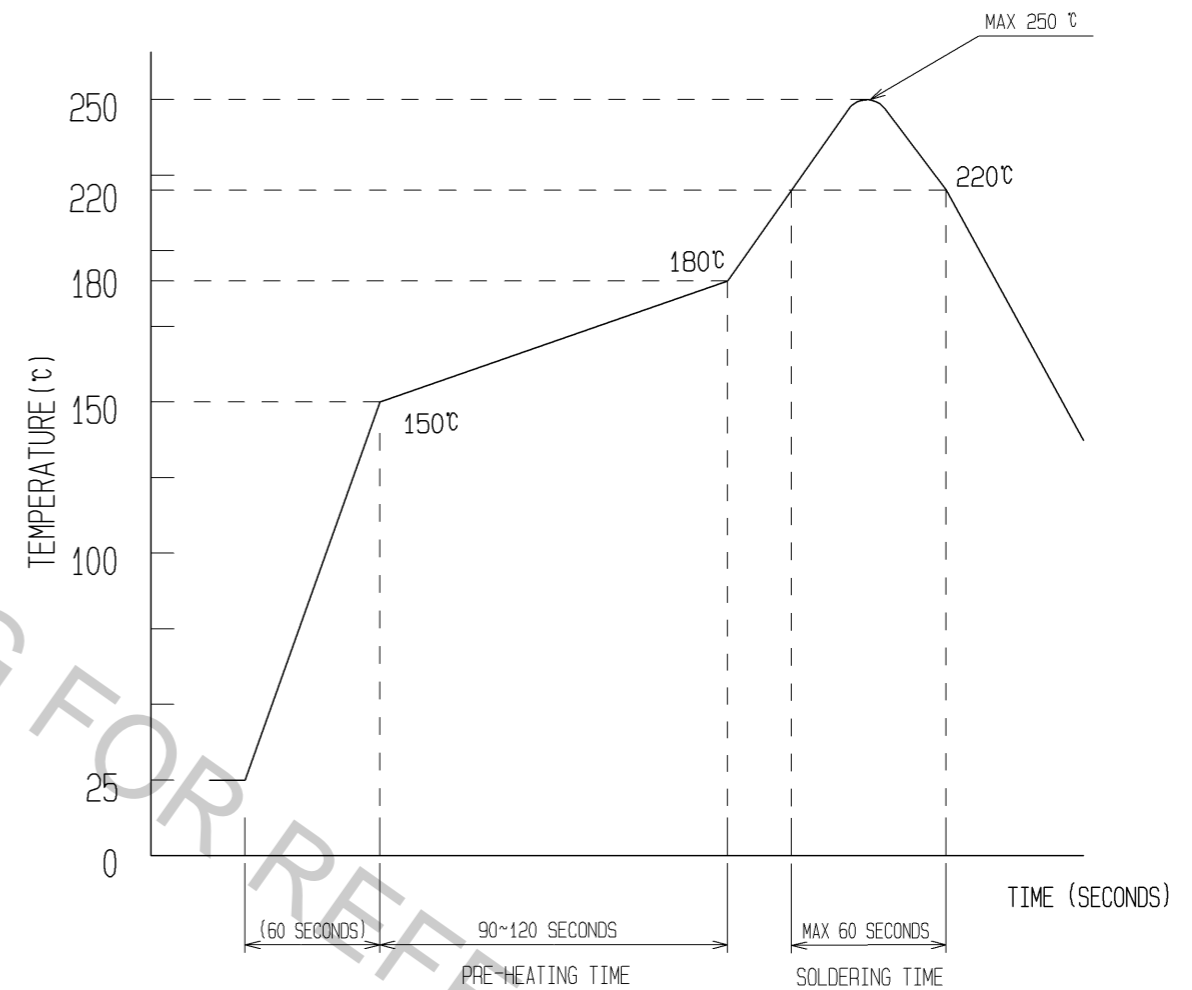


◆ RECOMMENDED METAL MASK DIMENSIONS

METAL MASK THICKNESS : 100 μm



6 RECOMMENDED REFLOW TEMPERATURE PROFILE USING LEAD-FREE SOLDER PASTE.

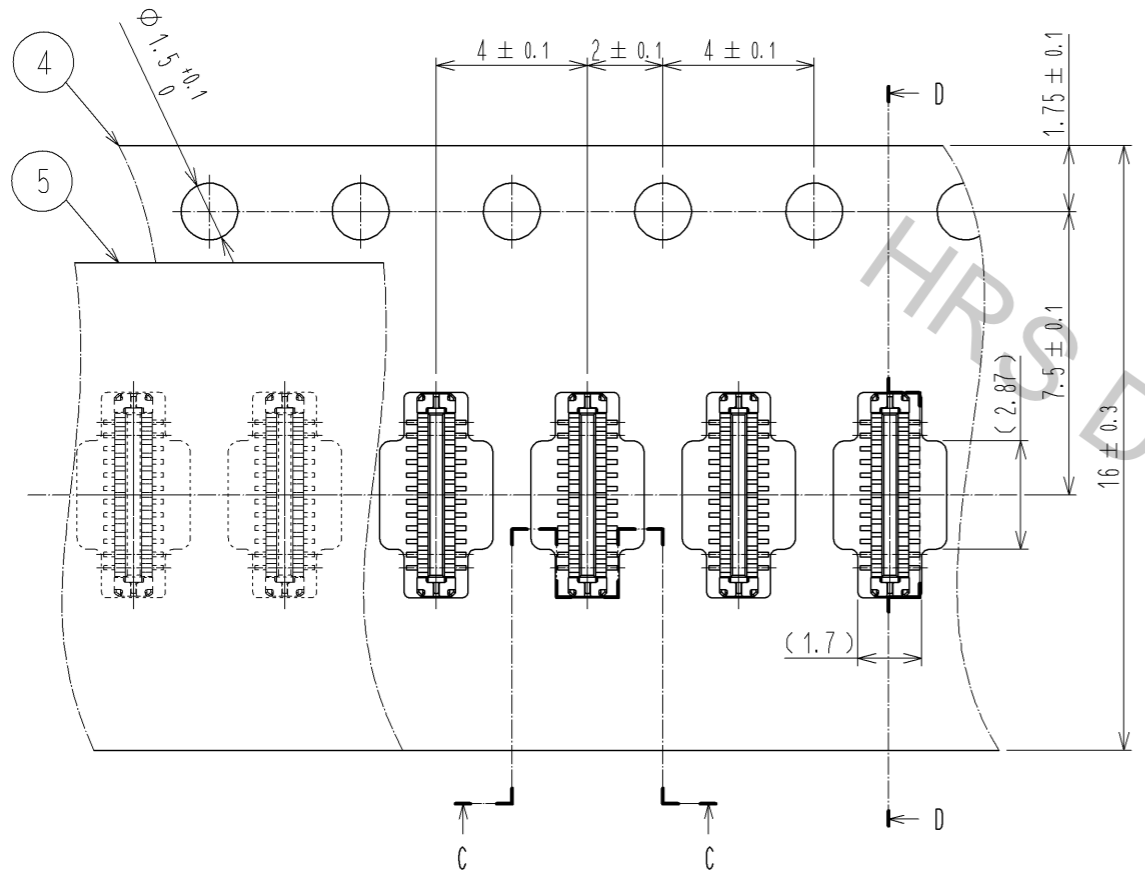


- REFLOW METHOD: IR REFLOW  
 NUMBER OF REFLOW CYCLES: 2 CYCLES MAX.
- REFLOW TIME  
 DURATION ABOVE 220°C, 60 SEC. MAX.  
 (PEAK TEMPERATURE: 250°C MAX)
  - PRE-HEAT TIME  
 PRE-HEAT TEMPERATURE(MIN): 150°C  
 PRE-HEAT TEMPERATURE(MAX): 180°C  
 PRE-HEAT TIME: 90-120 sec.

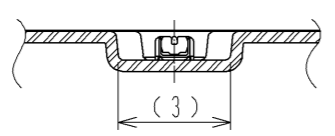
6 THIS TEMPERATURE PROFILE IS PER THE CONDITIONS SHOWN ABOVE. ADDITIONAL FACTORS, SUCH AS SOLDER PASTE TYPE, PCB SIZE AND OTHER MOUNTED COMPONENTS COULD AFFECT THE PROFILE, THEREFORE, A THOROUGH EVALUATION OF MOUNTING CONDITION IS REQUIRED PRIOR TO PRODUCTION. TEMPERATURE IS MEASURED AT CONTACT LEAD.

|            |             |                          |
|------------|-------------|--------------------------|
| <b>HRS</b> | DRAWING NO. | EDC3-355890-01           |
|            | PART NO.    | BM15FR0.8-24DP-0.35V<51> |
|            | CODE NO.    | CL673-1230-5-51          |
|            |             | △ 2/3                    |

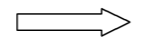
ENBOSSED CARRIER TAPE PACKAGING (5:1)



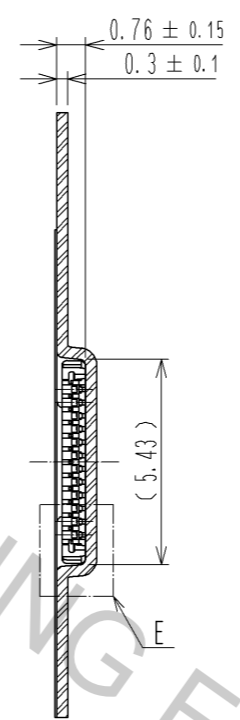
C-C (5:1)



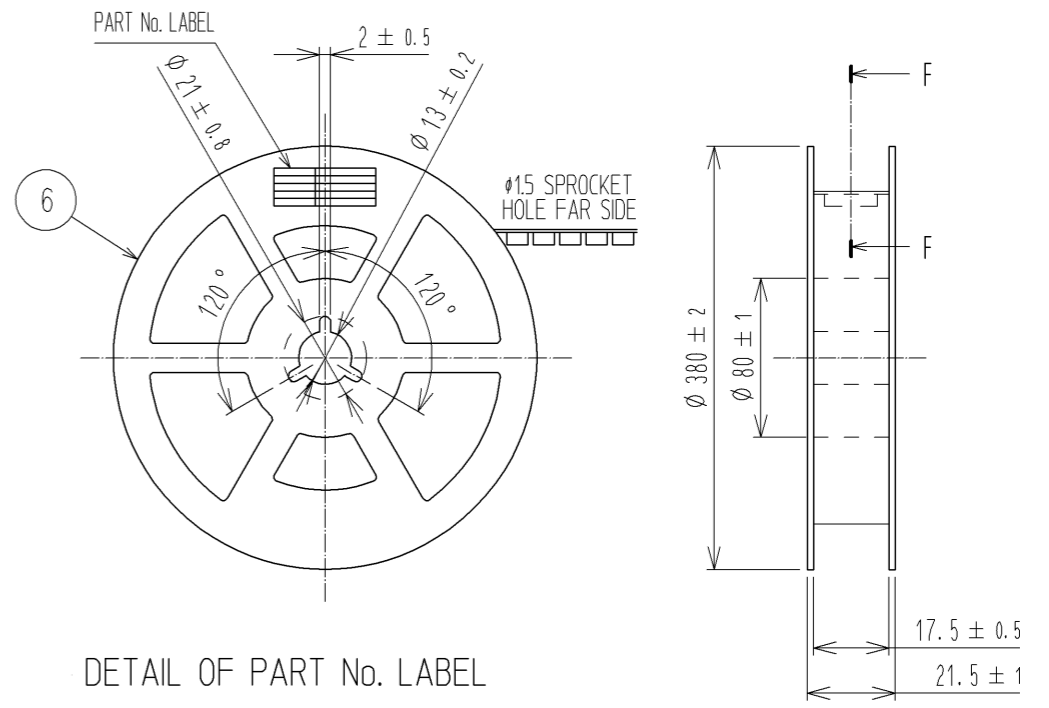
DIRECTION OF UNREELING



D-D (5:1)



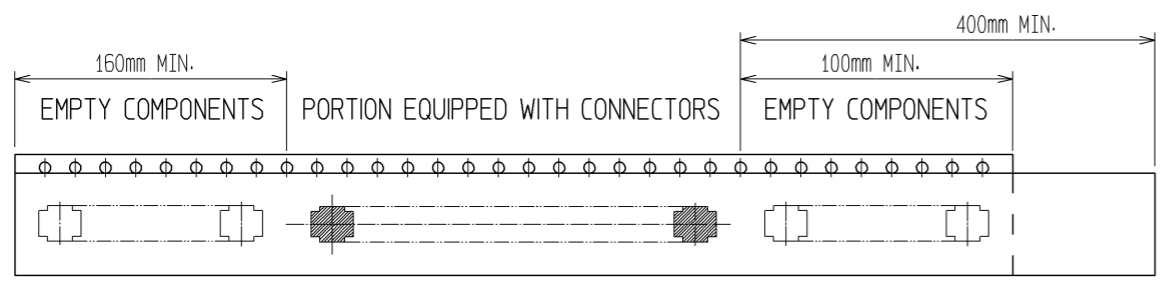
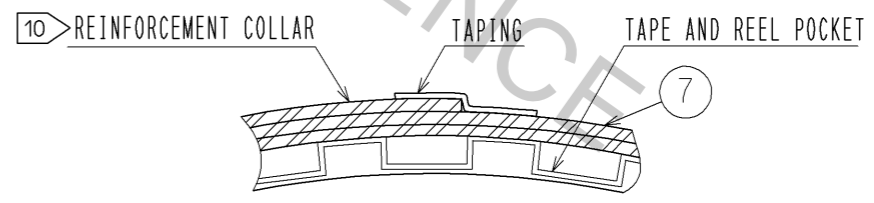
STYLE AND DIMENTION OF REEL (FREE)



DETAIL OF PART No. LABEL

|                      |                           |
|----------------------|---------------------------|
| SUPPLIER             |                           |
| QUANTITY             |                           |
| PART No.             |                           |
| CODE No.             |                           |
| DATE OF MANUFACTURED |                           |
| 製造年月日                | ** ** *                   |
| 製品コード                | CL673-1230-5-51           |
| 製品名                  | BM15FR0. 8-24DP-0.35V(51) |
| 数量                   | 15,000                    |
| 納入者                  | ヒロセ電機(株)                  |

F-F (FREE)

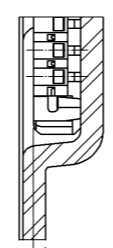


TRAILER

TAPING (FREE)

LEADER

E(10:1)



PICK UP AREA : ( 0.16 )

- 7. PER REEL 15000 CONNECTORS.
- 8. THE DIMENSIONS IN PARENTHESSES ARE FOR REFERENCE.
- 9 REFER TO JIS C 0806 AND IEC 60286-3 (PACKAGING OF COMPONENTS FOR AUTOMATIC HANDLING)
- 10 AFTER PACKAGING, ROLL 2 METERS OF THE REINFORCEMENT COLLAR TO OUTER CIRCUMFERENCE OF TAPE AND REEL POCKET, AND TAPE DOWN AT THE END THE COLLAR.

|            |             |                           |       |
|------------|-------------|---------------------------|-------|
| <b>HRS</b> | DRAWING NO. | EDC3-355890-01            |       |
|            | PART NO.    | BM15FR0. 8-24DP-0.35V(51) |       |
|            | CODE NO.    | CL673-1230-5-51           | △ 3/3 |
|            |             |                           |       |